



**BRANDT Manni-Plex® Mn**

# Build Stronger, Healthier Turf and Ornamentals

Applying the right combination of nutrients produces outstanding greens, tees and ornamentals. BRANDT MANNI-PLEX foliar nutrients were designed to deliver nutrition quickly and efficiently. Their small molecular size and weight helps get more nutrition into the plant for better results.

## Key Benefits of BRANDT MANNI-PLEX Mn

### Efficiency

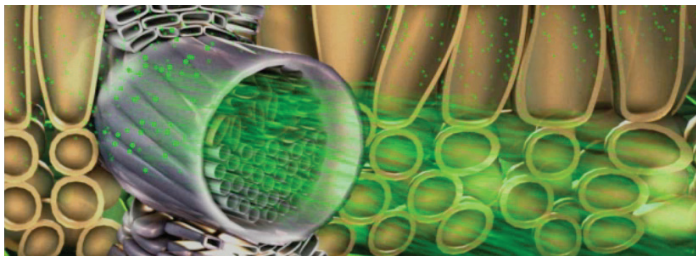
- Quickly supplies readily available N and Mn to plants and turf
- Proprietary formulation coats leaves and sticks to the surface, making nutrients available longer

### Effectiveness

- Builds strong, healthy and vibrant plants and turf
- Enhances root mass and growth
- Helps turf and plants better withstand stress
- When turf is deficient in iron and manganese, diseases such as Bermuda Grass Decline, Curvularia Blight and Take All Patch may occur. MANNI-PLEX® Mn and MANNI-PLEX® Fe help correct iron deficiencies.

### Easy to Use

- Ready-to-use liquid formulation
- Compatible with most fungicides, insecticides and PGR's
- May be applied using ground equipment, through fertigation or as a soil drench



Small particle size and low molecular weight allow nutrients to move to plant growth points quickly.

### Guaranteed Analysis

Total Nitrogen (N) .....	7.0%
4.6% Nitrate nitrogen	
2.4% Urea nitrogen	
Manganese (Mn) .....	5.0%
5.0% Water soluble manganese	

Derived from manganese nitrate and urea.

F76

## Application and Use

MANNI-PLEX® should be applied to actively growing plants and turf throughout the year. For best results apply early morning or late evening.

**Ornamental Crops:** Apply 1-2 quarts per 100 gallons water. Cover foliage thoroughly to point of runoff.

### Turf (Commercial):

- Green & Tees: 2-5 fl oz per 1,000 sq ft.
- Fairways & Sports Turf: 2.5-6.5 quarts per acre.
- Overseeding: 2 fl oz per 1,000 sq ft after germination.
- Sod Installation: 2 fl oz per 1,000 sq ft at installation.

*Optimum rate of application will vary depending on soil properties (such as pH, organic matter content, texture), weather conditions, time of year, general crop health and crop species. For best results, follow soil test or plant analysis recommendation.*

For more information, see BRANDT's Summer/Winter Success Spray programs. Always read full label before use.

For more information, talk to your distributor about BRANDT MANNI-PLEX® Mn or contact [Kym.Wood@brandt.co](mailto:Kym.Wood@brandt.co) (Eastern US) or [Steve.Stringer@brandt.co](mailto:Steve.Stringer@brandt.co) (Western US)

Brandt Consolidated, Inc.  
[www.BRANDT.co](http://www.BRANDT.co)

